

杏林大学医学部付属病院組織図

平成25年5月1日

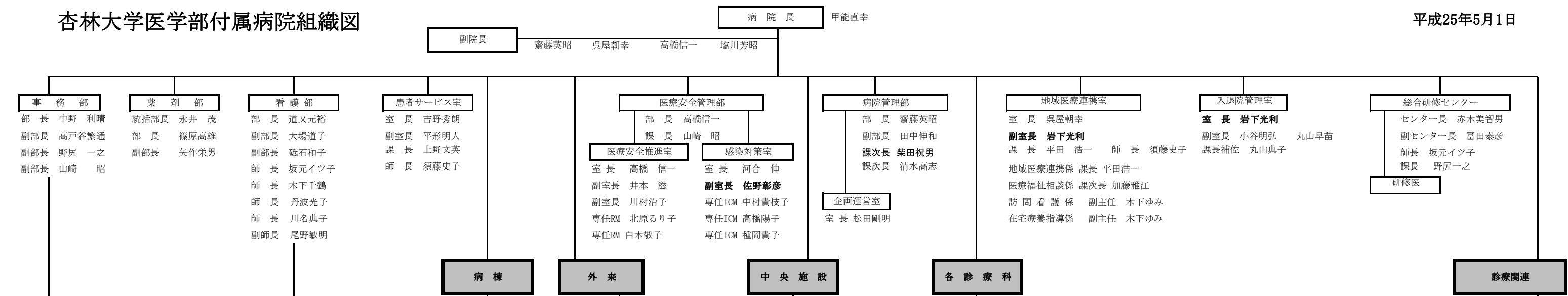


Table with columns for Department (診療科目), Director (部長・室長), Deputy Director (副部長・副室長), Chief (師長), Deputy Chief (副師長), and Hospital Director (病棟医長). Rows list various medical specialties such as Internal Medicine, Surgery, Pediatrics, and Obstetrics/Gynecology.